



IMPACT

CAMP ALIGN

TABLE OF CONTENTS

LETTER TO THE CHURCH	03
OUR STORY	04
VISION	06
CONNECTING THE VISION TO THE EXPANSION	10
OUR MISSION	13
OUR PLAN	14
OUR GOAL	15
YOUR NEXT STEPS	16
FAQS	19

LETTER TO THE CHURCH



As we journey through the unfolding story of Pennington Park Church, we're reminded of the wisdom in Proverbs 16:9, that "The heart of man plans his way, but the Lord establishes his steps." Our 2023 vision at Pennington Park Church drives us onward, humbly entrusting our plans to the Lord.

This vision shapes our identity as a church deeply committed to the Word of God, impacting all generations, and faithfully participating in the Great Commission (Matthew 28:16-20) locally and globally. It encapsulates five key characteristics that define us as a pillar of truth, a wellspring of discipleship, and a powerful catalyst for global outreach.

At the core of our church's vision is a desire to see every individual immersed in the transformative Word of God, resulting in gospel impact on the surrounding community. We envision PPC as a beacon of truth, drawing others to hunger for the Word and experience transformation through the gospel, leading to sustained numerical growth.

Simultaneously, we envision PPC evolving into a hub for maturing disciples, equipping and sending them out to evangelize, plant gospel-centered churches, and reach unreached people groups worldwide.

In essence, we envision a future where every member is a dynamic participant, engaged, equipped, and empowered to make a profound generational impact and extend the reach of the gospel far beyond our church walls, into the farthest corners of the world.

Thank you for prayerfully considering participating in the Impact Campaign by generously contributing. Your selfless giving has not only demonstrated a profound commitment to our church but has also played a pivotal role in supporting our shared vision for growth and impact. It is through your generosity that we can continue to strengthen our church community, faithfully obey the Great Commission, and pursue meaningful initiatives that align with our mission. Your support is truly invaluable, and we are sincerely thankful for your willingness to invest in the flourishing future of our church.

Together, we are making a lasting gospel impact throughout our congregation, surrounding community, and for generations to come.

With heartfelt gratitude,

A handwritten signature in orange ink, appearing to read "Chris Boyd", written in a cursive style.

Lead Pastor

OUR STORY



2014

The Next Door Mission was formed to lead and support College Park's new vision of planting, adopting, and revitalizing churches in and around Indianapolis. The need for a gospel-centered church in eastern Hamilton county became clearer, and by the end of the year, tracks were being laid to start a second College Park congregation in the city of Fishers.



2015

Chris Beals was hired as the lead pastor of the Fishers congregation, and a core group of people began meeting at College Park's Ministry Center in Indianapolis. For the next six months, relationships and ministry teams were developed in preparation for a future launch date. On September 13, College Park Fishers was officially launched at Fall Creek Intermediate School on Olio Road.



2016

College Park Fishers continued to grow as a tight-knit community was formed between its members. Twenty acres of property was purchased at the corner of Pennington Road and 126th Street with the hope of eventually establishing a permanent home in the City of Fishers.



2017

College Park Fishers moved its gathering location to Fall Creek Junior High School as its presence in the community became more solidified. Continuing to grow, College Park Fishers, with guidance and support from College Park North Indy, began preparing for a building campaign and held a Prayer and Worship Night at 126th and Pennington.



2018

The Multiply Campaign was formally launched at College Park Fishers as its people generously and faithfully committed funds toward a \$6.8 million building project. In November of 2018, a motion was passed by the congregation to make College Park Fishers a fully autonomous, self-governing church.



2019

The construction of a permanent building at 126th and Pennington began as the community of College Park Fishers continued to grow. As a final step toward self-governance, the members of College Park Fishers approved the taking on of a new name, Pennington Park Church, upon moving into a permanent building in early 2020.



2020

On Wednesday, March 25, Pennington Park Church received an approval for occupancy from the City of Fishers and held its first in-person services on Sunday, June 21.



2021-2023

The development of gospel-shaped and Bible-driven ministry deepened as Pennington Park continued to be a church firmly grounded in the Word of God. In addition, Pennington Park experienced exponential numerical growth. During this span, Sunday morning attendance grew by 75%. Even after purchasing two mobile units, capacity consistently reached 80% or higher on Sunday mornings resulting in the leadership to begin praying and planning about the church's next steps.

We are so thankful for the countless people who have used their God-given gifts and abilities to make the vision of Pennington Park Church become a reality. God is doing a faithful work in and through this body to **know Jesus and make Him known.**

VISION STATEMENT

We are a multi-generational church equipped with the Word to make disciples, plant churches, and reach the unreached locally and globally.

FIVE KEY CHARACTERISTICS OF THE VISION STATEMENT:

01

MULTI- GENERATIONAL

We emphasize every generation with our ministry offerings with an inter-generational approach because we are a church family committed to generational impact.

02

EQUIPPED WITH THE WORD

We are Bible-driven and trained with the Word aimed toward believers because we are doers of the Word not just hearers.

03

MAKE DISCIPLES

We make disciples through building personal relationships, living in community, and engaging in thriving ministries because we are participants, not spectators.

04

PLANT CHURCHES

We mobilize our people to launch gospel-centered churches because the local church is God's primary means for His people to live out the Great Commission.

05

REACH THE UNREACHED

We sacrificially participate in **local** and **global** outreach meeting physical and spiritual needs to reach those who have not heard the gospel because God's heart is for all the nations to worship Him.

2030 VISION

Over the next 7 years, our vision is to expand our current facility, which will enable us to serve around 1,500 people weekly, with thriving, multi-generational ministries focused on discipleship. We aim to launch a local church plant, raise Christmas Offerings exceeding \$300,000 annually, and eliminate all existing debt to double our outreach funds.

7 YEAR TIMELINE



2024: MINISTRY HEALTH & ENGAGEMENT

The priority for 2024 is to focus on “depth and not breadth.” The exponential numerical growth over the last 3 years has resulted in more and more people (praise God!), which means ministries across the board have been stretched. As a result, we need to prioritize ministry health and increase member engagement before ministry expansion. We’ll always have a welcoming posture to new people, but our priority will be on the health and depth of each ministry along with increasing member engagement in serving, community participation, becoming more equipped, and congregational care and shepherding.

2025: EXPANSION

After a year of prioritizing ministry health and member engagement, 2025 will be a year to focus on adjusting our ministries to the expanded space. Because our vision involves multiplying disciples, adding space to invite more people to Pennington Park aligns well. In addition, the expanded space will enable our ministries to increase effectiveness and continue to make generational impact.

2026: CHURCH PLANT & VISION

Pennington Park Church has experienced firsthand the power of church planting. With a need for more gospel-centered churches in the Hamilton County area, this year will be focused on developing a plan and vision for church planting that includes solidifying the church planter, the specific area to plant, the place of worship, a core team and training, and the timeline. This year will also be a time of adjusting to serving and caring for more people as a result of the expansion.



2027: CHURCH PLANT LAUNCH

After a year of planning, researching, and casting vision, 2027 will be focused on launching our first church plant. This will be a time of celebration but also will create gaps as we launch some of our most engaged people with this church plant. Filling those gaps and adjusting will also be a focus in 2027 as we continue to equip our people with the Word and call them to whole-hearted engagement.

2028-2030: ELIMINATE DEBT

One of the limiters we experience is servicing our debt payment each year. These funds could be dedicated to other ministry initiatives such as local and global outreach opportunities. Therefore, a focus for 2028-2030 will be to raise funds to eliminate all existing debt so we can reallocate those funds to impact our community and world.



CONNECTING THE
VISION
TO THE **EXPANSION**

THE VISION CHARACTERISTICS AND AN EXPANDED FACILITY



MULTI- GENERATIONAL

With an expanded facility we will be able to provide additional ministry offerings for all generations.



EQUIPPED WITH THE WORD

More ministry offerings will provide greater opportunities to equip people with the Word of God.



MAKE DISCIPLES

Having more space will increase our discipleship effectiveness by providing more intentional teacher-to-student ratios.



PLANT CHURCHES

An expanded facility will allow for more time to develop a church planting strategy and will provide additional people to be launched in our first church plant.



REACH THE UNREACHED

With more people at Pennington Park, our capacity to give to local and global outreach ministry will greatly increase.

IMPLEMENTING THE VISION WITH AN EXPANDED FACILITY



DEPTH

Enable our ministries to deepen and increase effectiveness.



BREADTH

Provide more space for more people, which means more who will be able to come and hear the gospel.



MULTIPLICATION

Supply more time and resources to pursue church planting and debt retirement resulting in increased funds for outreach.



BELONG.
GROW.
MULTIPLY.

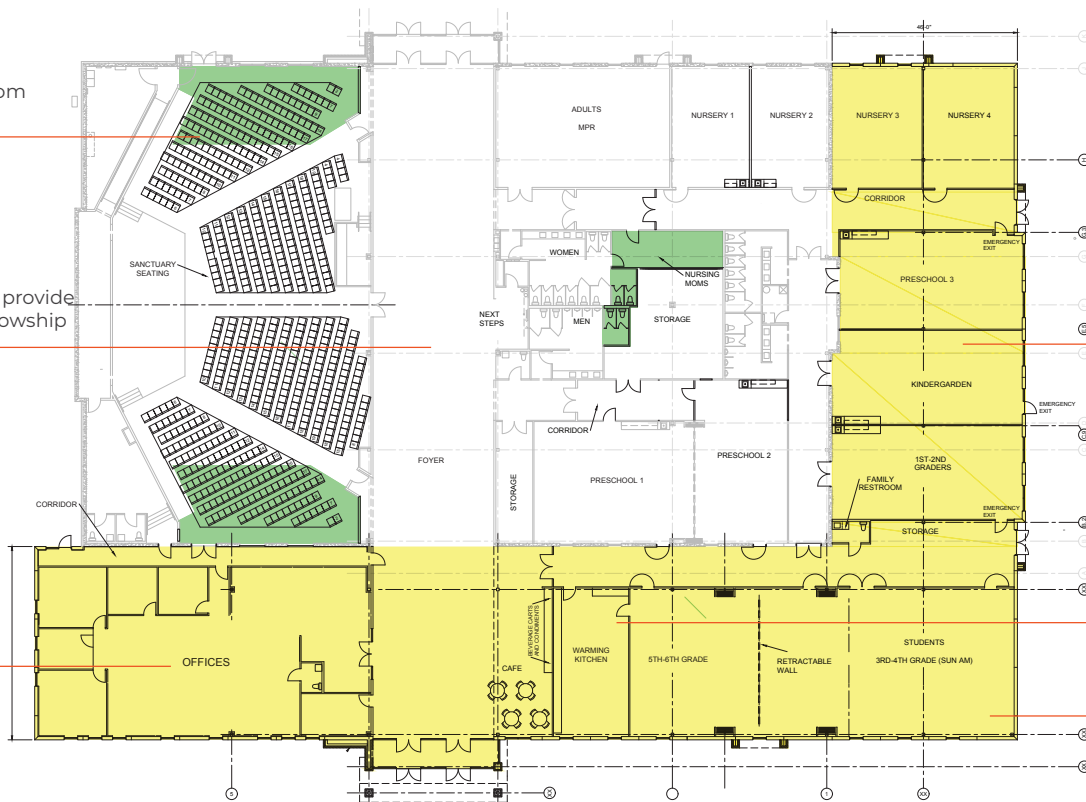
SCAN THE QR CODE TO LEARN ABOUT OUR MISSION AND STRATEGY

— OUR PLAN FOR THE EXPANSION

Expanded sanctuary from
450 seats to 625 seats

Extended lobby area to provide
additional space for fellowship

New staff offices &
counseling rooms



Additional children's
ministry classrooms

Larger kitchen

New space dedicated to
student's ministry

OUR GOAL



BUILDING COST

Anticipated total building expansion cost: **\$5,300,000**

TOTAL PROJECT COST



COMMITMENTS

The **\$4,500,000** will be paid using the three year commitments from PPC families.

TARGETED FUNDS



CASH

We've seen this need coming, and so we as a church have been saving up. **\$800,000** will be paid using cash from our PPC Reserves.

Our goal is to raise **\$4,500,000** over three years (2024, 2025, and 2026) to fund the Expansion Project.



YOUR NEXT STEPS

Our desire is to involve 100% of our church family in this campaign, emphasizing equal sacrifice rather than equal gifts, over and beyond regular ongoing giving and tithing.

Even if you submitted a commitment card last year, we are asking you to **resubmit** your commitment with a new commitment card. If you have given money already to the Impact Campaign, there will be a way to notify us on the new commitment card.

01.

Pray

Join us in prayer as we ask the Lord's blessing and leading with this vision.

02.

Engage

Participate in the ministries of our church such as serving and community outreach.

03.

COMMIT

Financially contribute in a sacrificial and joy-filled manner by submitting a commitment card no later than April 14th.

ANTICIPATED TIMELINE

Pending meeting our fund-raising targets, the timeline would be as follows:



Even if you submitted a commitment card last year, we are asking you to resubmit your commitment with a new commitment card.

MARCH 10, 2024

New commitment cards are distributed

MARCH 17, 2024

Congregational Q&A meeting regarding the congregational meeting packet

First week of Vision Series

MARCH 24, 2024

Congregational meeting that will include more information on the expansion and campaign

Second week of Vision Series

APRIL 14, 2024

Commitment Sunday (new commitment cards are due)

MAY 5, 2024

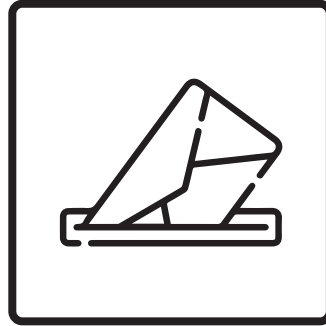
A congregational meeting to vote to approve proceeding forward with the expansion and construction loan

WAYS TO COMMIT



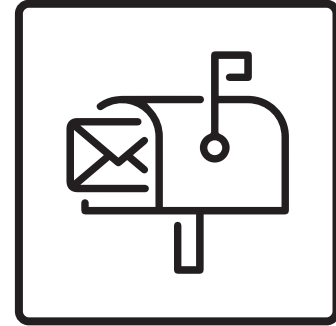
DIGITAL

Scan the QR Code and submit a digital commitment card.



RETURN

Fill out a physical commitment card and return in an envelope to one of the offering boxes in the church.



MAIL

Mail in a commitment card directly to the church.

FAQS

These are a condensed version of the FAQs. To see the full answers and the Elder's paper on debt position and debt elimination plan, please visit www.penningtonpark.com/impact.



What are the Capacity Challenges?

Our attendance has grown exponentially by 75% since 2021, now consistently welcoming over 975 on Sunday mornings and consistently reaching 80% capacity or more. With the well-documented “80% capacity rule” indicating we're nearing full capacity, we are excited to propose the Expansion, which will offer a more effective and long-term solution for our growing needs.



Do I need to resubmit my pledge if I submitted one when we first launched the Impact Campaign in 2023?

Yes, you will need to resubmit your commitment with a new commitment card. If you have given money already to the Impact Campaign, there will be a way to notify us on the new commitment card. All submitted commitment cards will be confidential with only Rob Loy (Finance Director) and Angela Hatcher (Executive Assistant) knowing who committed and the amount.



How Did We Reduce the Cost of the Expansion Project by Over \$1 Million Compared to Last Year?

We appreciated the original contractor's work on our current building but found their expansion proposal outside our price range. Seeking alternatives, we obtained estimates from another reputable contractor which was substantially lower. The new contractor offered innovative cost-saving solutions, totaling over \$1 million in savings without sacrificing quality or ministry functionality.



How Much Growth Will the Expansion Enable?

The expansion provides room to grow by 50%. Because we've always emphasized faithfulness over church size (1 Cor. 3:6), our vision prioritizes deepening ministry to foster discipleship as the Lord draws more people. Factors for determining the expansion size included financial prudence and our shepherding and discipleship model.



Have the Elders Considered Adding a Third Worship Service Before Expanding?

Adding a third worship service may address capacity restraints, but it comes with various challenges. Congregational harmony is crucial, and adding a third service could create polarization, affecting our unity. The worship service time would be shortened, impacting the culture of our worship services. Adding a third service could also lead to burnout among our church staff and volunteers. It would also potentially impact our relational connectedness and community with 1st service and 3rd service attendees unable to fellowship. While it would address some building restraints, it would not address all of them.



What is the Plan to Address Our Current Debt?

With a current debt of \$4.1 million at a blended 4.6% annual interest rate, we adhere to Biblical principles and target its full repayment by 2030. The decision to prioritize expansion and church planting over debt retirement is supported by our favorable interest rate, expected attendance increase to address the debt more effectively, and commitment to our vision of disciple-making and church planting.



What are the Plans for Church Planting?

Our church prioritizes church planting as a key aspect of our "sent and sending" core value, aligning with the early church's example in Acts and the Great Commission. Through prayerful planning and preparation, we aim to launch gospel-centered churches, beginning in 2027 after dedicating 2026 to planning. Church planting is the primary way to live out the Great Commission, fosters spiritual growth, and provides some additional space for newcomers.

Please visit

www.penningtonpark.com/impact

to read the full FAQs and the Elder's paper on debt position and debt elimination plan.



LEARN MORE AT
[PENNINGTONPARK.COM/IMPACT](https://penningtonpark.com/impact)



Pennington Park Church



info@penningtonpark.com



[@penningtonpark](https://www.instagram.com/penningtonpark)



317.827.8101



penningtonpark.com



13222 East 126th Street
Fishers, IN 46037



TO *KNOW* JESUS AND MAKE HIM *KNOWN*.